

WGS 84 POSITIONS can be plotted directly on this chart

RIVER HUMBER OLD HARBOUR TO BARTON HAVEN

ANNUAL 2023
DEPTHS IN METRES
SCALE 1 : 10000
SURVEYED BY
Harbour Master, Humber
ASSOCIATED BRITISH PORTS
6th February to 10th March 2023

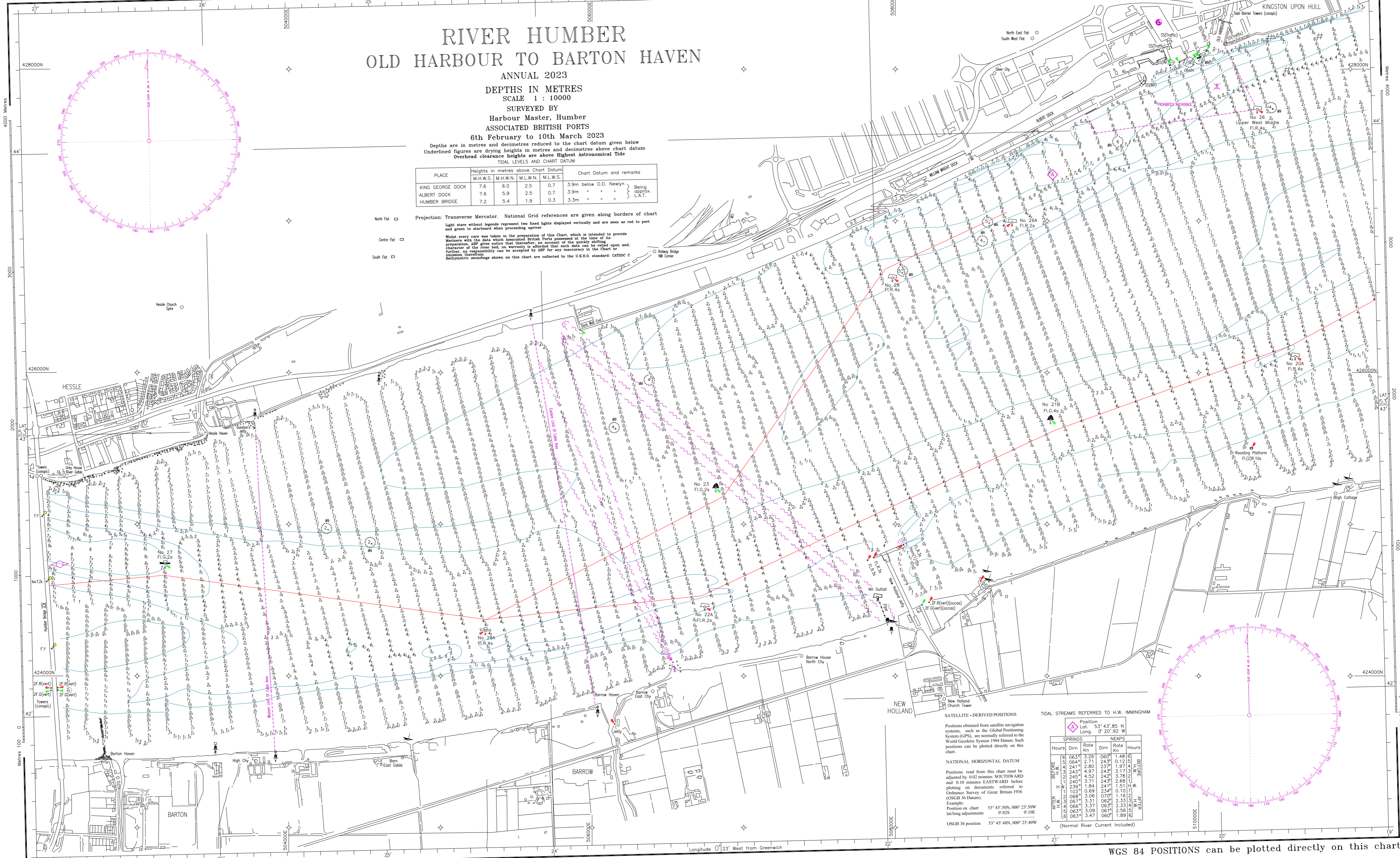
Depths are in metres and decimetres reduced to the chart datum given below
Underlined figures are drying heights in metres and decimetres above chart datum
Overhead clearance heights are above Highest Astronomical Tide
TIDAL LEVELS AND CHART DATUM

PLACE	Heights in metres above Chart Datum				Chart Datum and remarks
	M.H.W.S.	M.H.W.N.	M.L.W.N.	M.L.W.S.	
KING GEORGE DOCK	7.6	6.0	2.5	0.7	3.9m below O.D. Newlyn
ALBERT DOCK	7.6	5.9	2.5	0.7	3.9m - - -
HUMBER BRIDGE	7.2	5.4	1.9	0.3	3.3m - - -

Projection: Transverse Mercator. National Grid references are given along borders of chart
Light stars without legends represent two fixed lights displayed vertically and are seen as red to port and green to starboard when proceeding upriver.

Whilst every care was taken in the preparation of this Chart, which is intended to provide Mariners with the data which Associated British Ports possessed at the time of its preparation, ABP gives notice that there is no warranty as to the accuracy of the data or the character of the river bed, no warranty is afforded that such data can be relied upon and, further, no responsibility can be accepted by ABP for any inaccuracy in the Chart or omission therefrom.
Bathymetric soundings shown on this chart are collected to the U.K.H.O. standard: CATZOC C

- North Flat □
- Centre Flat □
- South Flat □



SATELLITE - DERIVED POSITIONS
Positions obtained from satellite navigation systems, such as the Global Positioning System (GPS), are normally referred to the World Geodetic System 1984 Datum. Such positions can be plotted directly on this chart.

NATIONAL HORIZONTAL DATUM
Positions read from this chart must be adjusted by 0.02 minutes SOUTHWARD and 0.10 minutes EASTWARD before plotting on documents referred to Ordnance Survey of Great Britain 1936 (OSGB 36 Datum).
Example:
Position on chart 53° 43' 50N, 000° 23' 50W
lat/long adjustments 0'02S 0'10E
OSGB 36 position 53° 43' 48N, 000° 23' 40W

TIDAL STREAMS REFERRED TO H.W. IMMINGHAM

BEFORE	AFTER	SPRINGS		NEAPS	
		Hours	Rate Kn	Hours	Rate Kn
0633	0633	3.26	0.67	1.48	0.60
0644	0644	2.71	2.43	0.12	0.50
2414	2414	2.80	2.37	1.97	0.44
2439	2439	4.97	2.45	3.17	0.44
2455	2455	4.52	2.42	3.78	0.44
2407	2407	3.71	2.45	2.68	0.44
2359	2359	1.84	2.41	1.51	0.44
1033	1033	0.69	2.34	0.10	0.44
0887	0887	3.06	0.70	1.16	0.44
0866	0866	3.37	0.65	2.33	0.44
0833	0833	3.09	0.61	2.56	0.44
0833	0833	3.47	0.60	1.89	0.60

(Normal River Current Included)

WGS 84 POSITIONS can be plotted directly on this chart